

Appendix A. Site Photos

This page intentionally left blank.



Photo 1. Location of Investigation at the Underhill site after restoration.



Photo 2. Location of investigation at Chapman site after restoration.



Photo 3. Klemm drill being utilized for the borehole drilling of BH-2 at the Underhill Site location.



Photo 4. Klemm drill being utilized for the borehole drilling of BH-3 at the Chapman Site location.



Photo 5. Typical concrete Christy box installation to seal each borehole following the investigation.



Photo 6. View of bottom of Borehole B-1 showing void area filled with collapsed material.



Photo 7. View through bottom of casing of Borehole B-2 showing void area filled with collapsed material.



Photo 8. View through bottom of casing of Borehole B-3 showing fibrous wood debris.

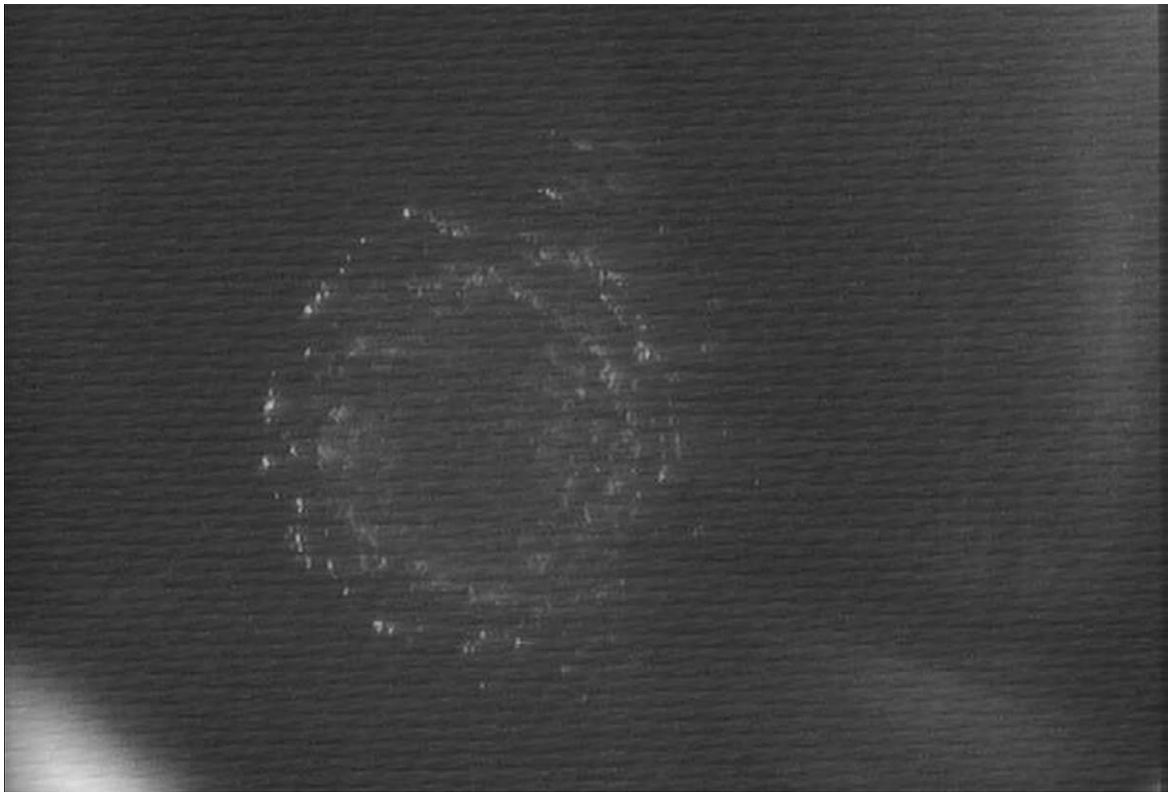


Photo 9. View of bottom of Borehole B-4 showing cavity and rings from water droplets.



Photo 10. View of bottom of Borehole B-5 showing fibrous wood debris.



Photo 11. Renishaw was on-site for deployment of the cavity and tunnel scanning equipment.